

**L - 96**

SECTION 1                      Questions 1-10

Questions 1-3

Answer the following questions using NO MORE THAN THREE WORDS AND/OR NUMBERS for each answer.

1. What are the advantages and disadvantages of sending things by air?
2. What might cause delays in transportation?
3. When will the customer arrive in Canada?

Questions 4-6

Complete the following sentences using NO MORE THAN THREE WORDS for each answer.

4. The costs on the price list include \_\_\_\_\_.

5. The customer isn't sending \_\_\_\_\_.

6. There is no extra charge for packing \_\_\_\_\_.

Questions 7-10

Complete the following information.

Customer name                      7. \_\_\_\_\_

Shipping from                      14 Hopton Close, Porton, 8. \_\_\_\_\_ , UK

Shipping to                      9. \_\_\_\_\_ Road, Toronto, TR12 3CN, Canada.

Contact number                      (mobile) 0977 023685

Collection date                      19th

Crates                      3 x 2 cubic metres

Total cost                      £360

Notes                      Must finish packing by 10. \_\_\_\_\_

SECTION 2 Questions 11-20

Questions 11-14

Complete the following sentences using NO MORE THAN THREE WORDS for each answer.

- 11. On the beach, there was a cast of a \_\_\_\_\_
- 12. The area is one of the best in Europe for finding \_\_\_\_\_
- 13. The museum contains reconstructions that are \_\_\_\_\_
- 14. Neovenator means \_\_\_\_\_

Questions 15-17

From the following list, choose the 3 things that you can experience at the museum. Write your answers on your answer sheet in any order.

- A. cutting fossils from rocks
- B. activity sheets for children
- C. sitting inside a T-Rex jaw
- D. sitting on a dinosaur's brain
- E. the smell of dead dinosaurs
- F. a map of where some dinosaurs lived
- G. an exhibition of dinosaur artwork



Questions 18-20

Complete the following notes about admission and getting to the museum.

Opening times	10 a.m. – 6 p.m. April- October. 10 a.m. – 4 p.m. November – March.
Admission	Adults-£4.75 Children 18. _____ -£2.75 Family (2 adults + 2 children) – £13 Students/Pensioners – £3.75 includes 2-hour guided dinosaur tour
Getting there	bus number 30 from the 19. _____ of the university
Groups	20. _____ for groups of 8 or more, if booked in advance
Contact details	Tel.- 01940434 Website – www.sandowndinosaur.com

SECTION 3

Questions 21-30

Question 21

Which three guests are on the radio programmer?

- A. Tony Wu, an undergraduate student from China, Susan Hall, International Student, and Wendy Clark, Head of the University.
- B. Tony Wu, a Master's student from China, Susan Hall, International Student, and Wendy Clark, Head of the ESL Unit.
- C. Tony Wu, a Master's student from China, Susan Hall, International Student Liaison, and Wendy Clark, Head of English.
- D. Tony Wu, a Master's student from China, Susan Hall, International Student Liaison, and Wendy Clark, Head of the ESL Unit.

Questions 22-24

Complete the following sentences using NO MORE THAN THREE WORDS for each answer.

22. Tony Wu took a Pre-Master's course because of his \_\_\_\_\_ English.

23. Susan says international students are a \_\_\_\_\_ of funds for universities.

24. Wendy says living amongst native speakers helps students \_\_\_\_\_.

Questions 25-27

Choose the correct answer, A, B, C or D.

25. How many students on Tony's course passed?

- A. All of them.
- B. 28.
- C. 23.
- D. 5.

26. How many universities in the country have special course for international students?

- A. All of them.
- B. More than 12.
- C. 12.
- D. Less than 12.

27. What do private colleges focus on, according to Wendy?

- A. Pre-Master's courses.
- B. Exam-related courses.
- C. General English courses.
- D. Technological terminology.

Questions 28-30

Complete the following sentences using NO MORE THAN THREE WORDS for each answer.

28. Wendy says a pre-Masters course should encourage students to \_\_\_\_\_ their teachers.

29. Wendy says a pre-Masters course costs the same as a \_\_\_\_\_ Master's programme.

30. Susan thinks a \_\_\_\_\_ for such courses would be good.

SECTION 4

Questions 31-40

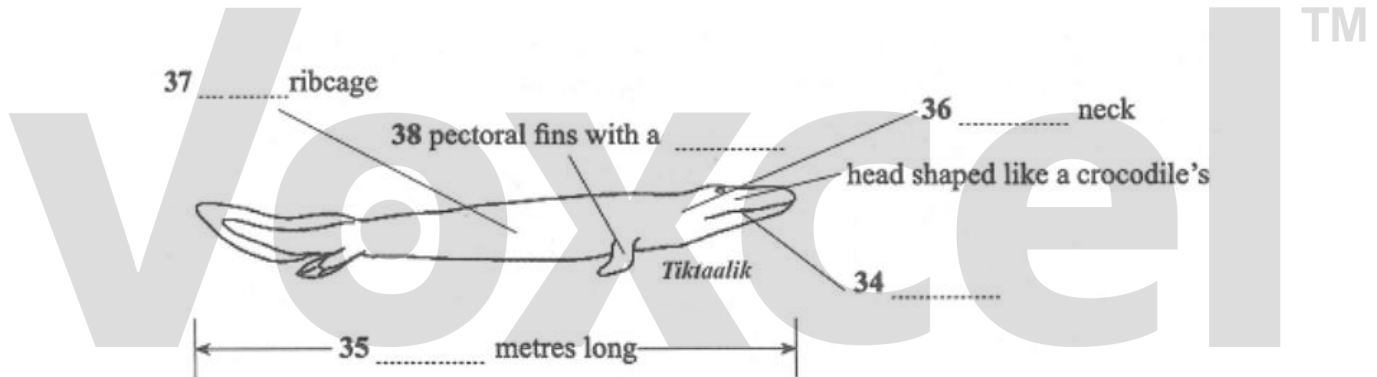
Questions 31-33

Complete the following sentences using NO MORE THAN THREE WORDS AND/OR NUMBERS for each answer.

- 31. Tiktaalik rosae is considered to be an evolutionary \_\_\_\_\_.
- 32. Tiktaalik rosae lived around \_\_\_\_\_ ago.
- 33. The remains of the Tiktaalik rosae were found 600 miles from the \_\_\_\_\_.

Questions 34-38

Label the diagram, of Tiktaalik rosae using NO MORE THAN THREE WORDS AND/OR NUMBERS for each gap.



Questions 39-40

Answer the following questions using NO MORE THAN THREE WORDS for each answer.

- 39. How long had the researchers been looking when they found the Tiktaalik remains?
- 40. Where were the late Devonian rocks originally created?

**Answers – L 96**

1. Faster, more expensive
2. Logistics, weather (conditions)
3. 19th next month
4. Tax (and) insurance
5. Furniture
6. Fragile items/things
7. Debra Whealing
8. PT6 2JA
9. 42 A Lake View
10. 1 o'clock/13:00
11. Dinosaur's footprint
12. Dinosaur fossils
13. Full-size / full size
14. New hunter
- 15 – 17. B, E, F (IN ANY ORDER)
18. Under 15
19. Main gate
20. Discount
21. D
22. Lack of fluency
23. Significant source
24. Develop language skills
25. C
26. B
27. B
28. Challenge
29. Full
30. Nationwide benchmark
31. Missing link
32. 375 million years
33. North Pole (NB capital letters not required)
34. Sharp teeth
35. 1.2-2.7
36. Clearly defined
37. Strong
38. Wrist joint
39. 5/five years
40. near (the) equator